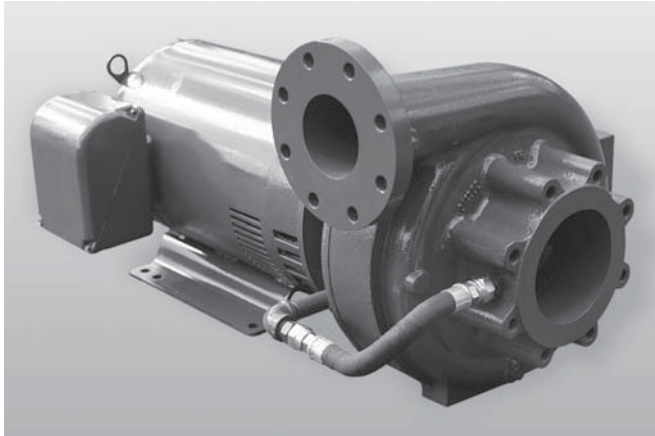


HC Series

Standard Centrifugal Pumps- Close Coupled

PAGE: CP-700

DATE: June 5, 2006



Features:

- 1-1/2" - 10" discharge sizes
- Capacities to 7000 GPM, 480' TDH
- Horsepower: Up to 200 HP
- Standard ductile iron construction with bronze wear ring and sleeve
- Replaceable wear rings
- Superior NPSH characteristics
- 150# rated flat faced flanges
- Heavy wall construction
- Grade 5 capscrews
- HC75 & HC10 Series- Enclosed impellers, internally hydraulically balanced
- Double volute on HC10x10-14, for balanced radial forces, HC14 Series- External balance line standard
- Standard with graphite packing or single mechanical seal

Model Number Explanation

Example: 7HC31575-CCPHAA

7 = 7.5 Horsepower (CC only)

HC = Horizontal Centrifugal

3 = Suction Size

15 = Discharge Size

75 = Nominal Impeller Dia.

CC = Close Coupled

P = Shaft Sealing:

P=Packing

M=Mechanical Seal

HAA = Impeller Diameter (Alpha)

A=0 F=5 L=10

B=1 G=6 M=11

C=2 H=7 N=12

D=3 J=8 P=13

E=4 K=9 Q=14



Franklin Electric

400 East Spring Street, Bluffton, IN 46714

Tel: 260.824.2900 Fax: 260.824.2909

www.franklinpumps.com