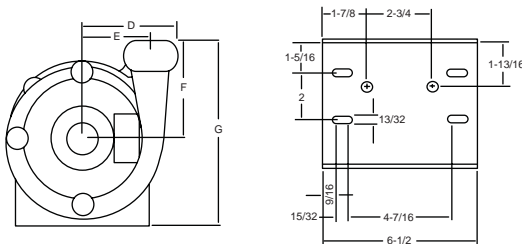
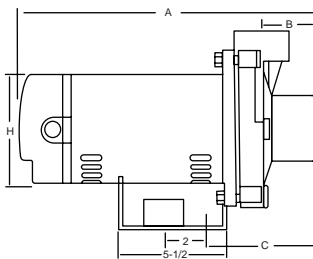


DDD/DDS Series End Suction Centrifugal Pumps

PAGE: CP-300
DATE: June 5, 2006



NRTL/C
CSA108
UL778



Features:

- Available in Cast Iron(DDD Series) or Stainless Steel (DDS Series) models.

DDD Series Features:

- Cast iron seal plate for dependable high temperature operation.
- Glass filled thermoplastic impeller for increased efficiency and dependable high temperature operation.
- Back pull-out design provides access to internal parts without disturbing the plumbing.
- Mechanical shaft seal insures a leakproof fit and continuous water lubrication.
- Maximum temperature limit of 140°F and maximum working pressure of 150 PSI.
- Square flange open drip-proof motor for easy service and reliability.
- Available in single and three phase models.
- Enclosed impeller design for increased efficiencies.
- Chemical resistant thermoplastic impeller.

DDS Series Features:

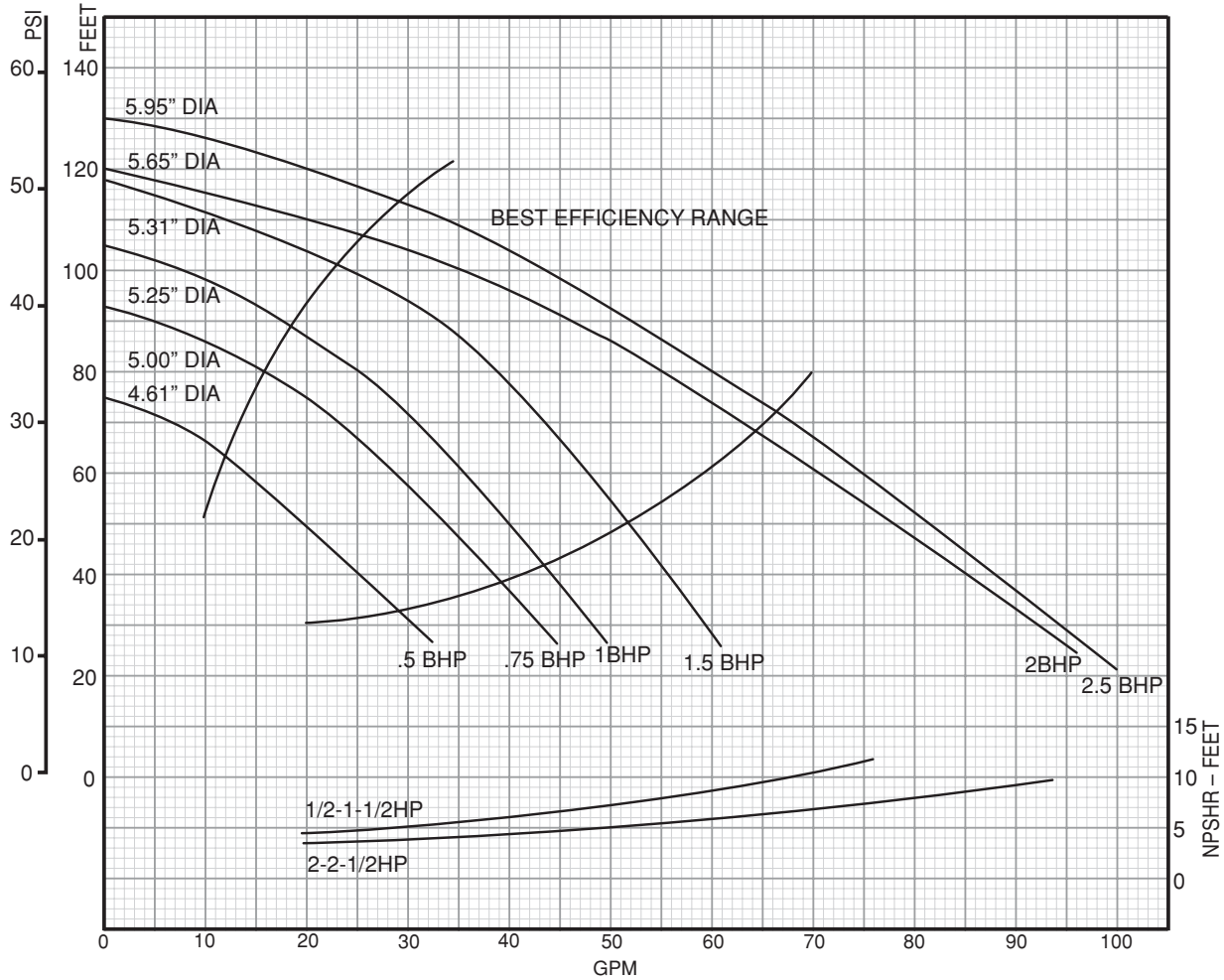
- All of the DDD Series features above except:
- Viton Mechanical shaft seal for added chemical resistance.
 - 304SS Case and seal plate.

Dimensions

H.P.	Suct. (NPT)	Disch. (NPT)	A	B	C	D	E	F	G	H
1/2	1-1/4"	1"	14-11/16"	2-3/8"	5-5/16"	4-7/16"	3-1/2"	4-5/8"	8-3/4"	5-1/2"
3/4	1-1/4"	1"	14-11/16"	2-3/8"	5-5/16"	4-7/16"	3-1/2"	4-5/8"	8-3/4"	5-1/2"
1	1-1/4"	1"	14-11/16"	2-3/8"	5-5/16"	4-7/16"	3-1/2"	4-5/8"	8-3/4"	5-1/2"
1-1/2	1-1/4"	1"	15-3/16"	2-3/8"	5-5/16"	4-7/16"	3-1/2"	4-5/8"	8-3/4"	5-1/2"
2	1-1/2"	1-1/4"	16-11/16"	2-13/16"	6-1/8"	5"	3-9/16"	5"	9-1/8"	6-5/16"
2-1/2	2"	1-1/2"	16-11/16"	2-13/16"	6-1/8"	5"	3-9/16"	5"	9-1/8"	6-5/16"

DDD/DDS Series Performance End Suction Centrifugal Pumps

PAGE: CP-305
DATE: June 5, 2006



HP	Suction x Discharge	Capacities GPM											Shut Off Head	
		30	35	40	45	50	60	70	80	90	100	110		
Total Head - Feet														
1/2	1-1/4" x 1"	30	27	25	22	19	14	-	-	-	-	-	-	74
3/4	1-1/4" x 1"	-	41	38	36	34	29	23	16	-	-	-	-	93
1	1-1/4" x 1"	-	-	-	42	40	36	31	25	18	-	-	-	105
1-1/2	1-1/4" x 1"	-	-	-	-	52	47	44	39	34	25	-	-	118
2	1-1/2" x 1-1/4"	-	-	-	-	-	-	64	56	47	36	23	-	121
2-1/2	2" x 1-1/2"	-	-	-	-	-	-	68	61	53	45	35	-	131

NOTE: All performance data based on rated nameplate voltage.